

# LAMBS LANE NEWS



**Important!**

## Academisation

Here is a link to a recording of the parent consultation regarding joining the Orchard Learning Alliance. Governors will be making a decision on Monday evening so please send any questions or concerns to the office before then.

[Video link](#)

**WEEK 3 - 18.11.22**

Your schedule for next week:

Monday	Tuesday	Wednesday	Thursday	Friday
	3:30 — 4:30 KS1 Dance	3:30 — 4:30 Y3/4 Gym	3:30 — 4:15 Y3/4 Cricket	3:00—3:30 Merlins' sharing assembly
	3:30 — 4:15 Y5/6 Football	3:30 — 4:15 Y1/2 Ball games		3:30 — 4:30 Y5/6 Dodgeball

Please note KS1 hockey and KS2 running club will not be happening for the rest of the term due to the fading light. All other outdoor clubs will finish at 4:15.

Merlins parents are welcome at 2:45pm to look at their child's books.



## Attendance

As a school, we aim to have above 96% attendance. We hope you can support us in this goal!



Class	Attendance percentage
Owls	94.6%
Wrens	97%
Woodpeckers	97%
Kingfishers	95.7%
Merlins	98.5%
Year 5	91.2%
Year 6	97.8%
Whole School	96%

## MESSAGE FROM THE HEADTEACHER

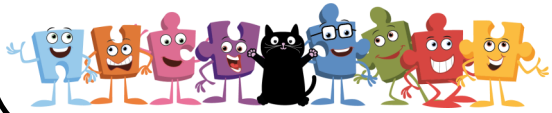
Huge congratulations to the school choir following their performance at the Hexagon last Friday evening. We were treated to some fabulous singing, delivered with enthusiasm - the audience left feeling uplifted. Thank you to Miss Boyd and Mrs Rennie who gave so much of their time to it, and supported the children as they struggled to learn a huge number of words and songs in a very short space of time. This week parents were invited to attend 2 consultation events about academisation - thank you to those who attended and raised some really interesting questions for governors to consider on Monday.

Sharon Finn



We have just had anti-bullying week where we have been doing activities linked to the theme: **Reach Out**

With your family, talk about trusted people you can reach out to.



# Arts Focus



## Perfect Day – Various Artists

Each year, a song is released to raise money for Children in Need.

In 1997, a group of singers got together to create this song. It raised over £2 million for the charity.

Do you like it?

What would your 'perfect day' be?

[Click here to hear the song!](#)

## Noticeboard

### Poppy Appeal

Thank you Lambs Lane parents and children for all of your generous contributions for this year's Remembrance Poppy Appeal.

We raised an amazing:

**£334.02**

### Brigade Clothing – School Uniform

Brigade have sent us details of their Black Friday sale.

[www.brigade.uk.com](http://www.brigade.uk.com)

**Discount Amount:** 10%

**Dates:** Friday 25th November to Midnight

Sunday 27th November

**Promotion code:** BFNOV2022

**Parent enquiries -** [sales@brigade.uk.com](mailto:sales@brigade.uk.com)

### System Update

We have had a change to our main data system. This system feeds into all our other systems such as parent mail, school money etc. It may cause duplicates on some accounts. This is a blip that the office are working hard to rectify. If you experience any problems in parent mail or school money, please contact the office.

### Traffic around school

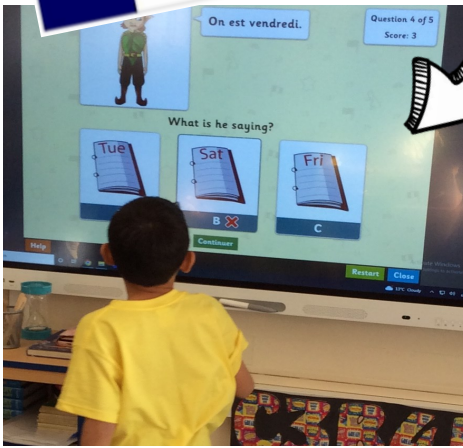
There was an incident involving two road users outside of school this morning at drop off. We apologise if anyone witnessed inappropriate language or behaviour. Please come and speak to one of the Senior Leadership Team if you are ever concerned about the behaviour of others around the school site. Thank you.



# Kingfishers' Learning Showcase

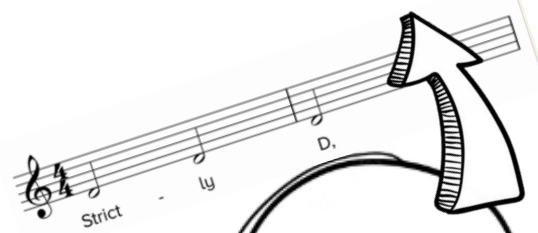
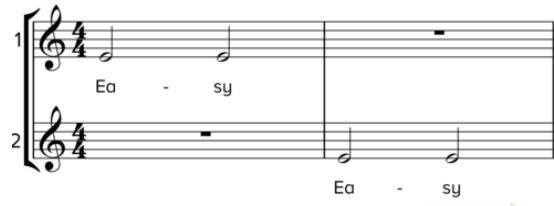


Ask me the days of the week in French?



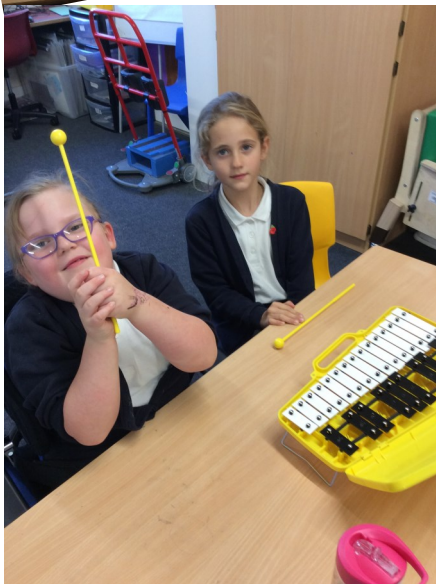
This week, we have been learning to play specific notes on the glockenspiel, including reading the notes on a score. We had to listen carefully to our friends and make sure we played in time with everyone. This wasn't always easy!

In French we have started our new unit and are learning the days of the week. We will build up our vocabulary over the next few weeks to start having conversations in French. In Geography we have been practising our atlas skills.



Ask me which notes I can see on this score?

Did you know that different notes are played for different amounts of time?



In Geography we have been using atlases to find countries in Europe. We have also been learning about coordinates.



# Children in Need



Today, we have been raising money for Children in Need. We have had a GREAT day! We raised a grand total of £168.70 so far



# Sport

Congratulations to both our netball and football teams for great sportsmanship and effort last week!

Our Netball team travelled to Shinfield Juniors where they played 3 tight fought games narrowly missing out on victories but showed great heart and enthusiasm during the competition. Each game we played there was a visible improvement! Well done girls!

Our Football team joined about 20 other schools at Cantley Park where Reading FC had kindly organized a football tournament. After impressive wins and last minute goals Lambs Lane managed to get through the group stage and into the last 16. Penalty shootouts is never kind to the English however after winning penalties in both the last 16 and quarter final games we were into the semis. Our opponents, Keephatch were a strong side and unfortunately with the last kick of the game, they managed to win by 1 goal.

All players from both teams represented the school amazingly on and off the pitch.





# TAKEHOME

21 - 27  
Nov



Picture  
News



What can football teach us about  
the wider world?

## In the news this week

The men's FIFA World Cup 2022 has started in Qatar and will run until 18<sup>th</sup> December. It is the 22<sup>nd</sup> edition of the competition, and the first played in the Arab world. The 64 matches of the tournament will take place across eight venues in the country. Usually, the event takes place in summer but because of the extreme heat at that time of year, it has been moved to a November-December winter slot, though temperatures will still reach about 25°C. The decision to stage the tournament in Qatar has been criticised because of concerns over the country's poor treatment of the large number of workers from other countries, employed to help them prepare for the tournament.

### Things to talk about at home ...

- Have you been watching the World Cup so far? Share your thoughts on the tournament.
- As the World Cup is held in different countries, do you think it provides an opportunity for people to learn about life in other parts of the world?

Check out the Picture Newspaper  
on our website: [Click Here](#)



Russell Players



# GOLDILOCKS

## Three Bears and the Detectives

Juliet Devon  
in arrangement with Lady Bee Scripts

Swallowfield Parish Hall RG7 1QX

Saturday 19th November. Matinee 2.30pm. Evening 7.30pm.  
Sunday 20th November. Matinee 3.00pm.  
Wednesday 23rd November. Gala Performance plus meal 6.45pm.  
Saturday 26th November. Matinee 2.30pm. Evening 7.30pm.  
Tickets Adults £12.00. Under 18 £5.00. Gala Performance £25.00.  
Tickets available from Swallowfield Parish Stores.  
Our box office 07710 500 491  
or via <https://www.ticketsource.co.uk/russellplayers/e-rkqjog>




## PA's NEEDED

CAN YOU SPARE  
A FEW HOURS  
£11.86-£14.98ph



To support SEND  
children and Young people with  
accessing activities and their  
communities  
after school, weekends or holidays  
For more information contact:  
[sophie.hookway@wokingham.gov.uk](mailto:sophie.hookway@wokingham.gov.uk)

# GADGETEERS



**Starts Thursday 1 December 2022 and  
ends on Monday 20th February 2023.**

**Visit the Winter Mini Challenge website  
[wintermini.org.uk](http://wintermini.org.uk)  
to sign up and find out  
how you can get involved.**