

LAMBS LANE NEWS



WEEK 10 - 17.11.23

Important!



WOOD

Please let us know if you are able to help us move the pile of wood on the school field? Ideally if you have facility to dispose of it this would be great. However, if you could assist with transporting it to Finchampstead this would be a great help too.

Your schedule for next week:

Monday	Tuesday	Wednesday	Thursday	Friday
LAST DAY OF THE BOOK FAIR	3:30 — 4:30 Y1/2 Racket Sports	3:30 — 4:30 KS2 Tag Rugby	3:30 — 4:30 Y1/2 Multi Skills	Parent Coffee Morning
				3pm Kingfishers Sharing Assembly
				3:30 — 4:30 KS2 Basketball



Attendance

As a school, we aim to have above **96%** attendance. We hope you can support us in this goal!



Minutes missed of school due to lateness

This week we have had **499 minutes (8 HOURS 31 mins)** of lost learning due to lateness. **22 pupils** were late this week.

Class	Attendance percentage
Owls	91.3%
Wrens	97.7%
Woodpeckers	96%
Kingfishers	92.8%
Merlins	99.7%
Robins	95.2%
Hérons	95.7%
Whole School	95.5%

MESSAGE FROM THE HEADTEACHER

A huge thankyou to everybody that came to view our Remembrance Day gallery on Monday after school. We had a fantastic turnout and everybody agreed that the work produced by the children captured the meaning of the occasion.

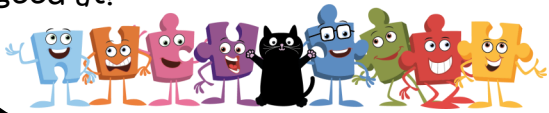
Sharon Finn



In PSHE this term, we are looking at the theme:

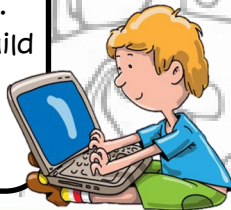
Celebrating difference

This week, the children have talked about what they like and what they are good at. What do you think you're really good at?



Computing

Can you use a clear set of instructions (algorithm)? Use Lego, wooden bricks or a piece of paper and sit back-to-back with a partner. Take it in turns to instruct each other to build or draw something, this could be a tower, a house, make a pattern. Can you create the object that your partner is describing?



Arts Focus



Eva Cassidy—Autumn Leaves

[Click here to watch the music video.](#)

As it is autumn and we are seeing the leaves falling off the trees around us, have a listen to this song! What do you notice about the song? How would you describe it? Eva Cassidy was a famous jazz, blues and folk singer. She was described as a 'songbird' because of her beautiful and emotive voice.

Noticeboard

If you have any:

Shoe Boxes for year 5 & 6
Yoghurt Pots for year 3 & 4
Please could you bring them into school on Monday

Christmas Hamper competition

The competition is now well underway for the class Christmas hamper competition, to be raffled at the Christmas Fair. The hampers will have an independent judge and the winning class will receive a prize. Please see below for your class categories:

- Owls—Mum
- Wrens—Chocolate
- Woodpeckers—Gardening
- Kingfishers—Dad
- Merlins—Toys
- Robins—Christmas
- Herons—Craft

Dates for the diary

Friday 24th Nov—Dress down in exchange for bottles for the bottle tombola

Friday 1st Dec—Year 4 Trumpet concert

Tuesday 5th Dec—KS1 Nativity more info to follow

Wednesday 6th Dec—KS1 Nativity more info to follow

Friday 8th Dec—Owls sharing assembly & Carols

Friday 15th Dec—End of Autumn Term finish at 2pm

Christmas Fair

The PTA Elves are busy in their workshop hard at work with the arrangements for the Christmas Fair. If you have any of the following for donation please delivery to the school office:

- Pre-loved Christmas attire for the pre-loved stall
- Good quality pre-loved toys and games.
- Any unwanted gifts suitable for raffle prizes

Your children will also be bringing home sweetie bags for filling ready for the sweetie stall. When filling these up please remember that we are a nut free environment.



*Come for a
cuppa and a chat!*

COFFEE MORNING



A chance to have a chat
with some members of
school staff or other
parents. If you have
questions, worries or you
just fancy having a
natter, pop along!

Date: Friday 24th Nov

Time: 9am

Venue: School hall



Kingfishers' Learning Showcase

The Kingfishers have been very busy finishing off their poems in English this week, we have focused on rhyming and including some interesting adjectives.

In Maths we have been learning the 9 times table and finding division and multiplication facts linked to this.

In Art we have been busy putting together a beautiful wreath for the Christmas fair!



In religious education we have been learning about Christianity and have been looking at different bible stories like Noah and the flood.



We also had an art exhibition to display our beautiful poppy art as part of remembrance day.



TAKEHOME

13 - 19
Nov



Picture
News



**Are there some jobs
robots could never do?**

Amazon

In the news this week

A new robot called Digit, designed to be human-like and that is capable of lifting and moving items, is being tested in warehouses of the online retailer, Amazon. The robot is in its first few weeks of trials at Amazon's facility in Seattle, USA, as the company tries to improve automation in its processes. To begin with, the robot is being taught to pick up and move empty boxes to ensure that they are ready for reuse. The yellow boxes, or totes, are used throughout the company's fulfilment process.

Things to talk about at home ...

- > Do you think that robots will be used more and more in workplaces and homes? If so, what do you feel they will be used for? Why?
- > Make a list of jobs that you think robots would be good at and a list of those that you think people will always be needed for.

Check out the Picture Newspaper on our website: [Click Here](#)



Multi-Sports Holiday Camps



Christmas Holidays

Lambs Lane Primary School

Spencer's Wood, RG7 1PW



AVAILABLE NOW
FREE HALF
SPACES



NEARLY 200 5 STAR GOOGLE
REVIEWS
4 TO 12 YEARS*
CHILDREN IN FOUNDATION TO YEAR 7

RANGE OF SPORTS
AVAILABLE EACH DAY

**WEDNESDAY
TO THURSDAY**
20TH - 21ST DEC

9AM - 3PM
DROP OFF FROM 8:30

£25 PER DAY **£44 FULL WEEK**

u-sports.co.uk/berkshire-holiday-camps



uSports



**BERKSHIRE
MUSIC TRUST**
Making music for everyone



Sign up within
24 hours of the event
taking place to get
10% off your first
term of lessons!

Come and try all our instruments for FREE!

Just turn up on Saturday 18th November

1.30pm-3.30pm at our

Bracknell Music Centre, Ranelagh School

Ranelagh Drive, Bracknell RG12 9DA

admissions@berksmusictrust.org.uk

**Saint Sebastian
Wokingham Band
Presents**

The Snowman



**Film Screening with
Live Band Soundtrack**

Followed by

Christmas Festive Favourites

£12 ADULT **£6 U18**

16TH DECEMBER - 3:30PM & 6:30PM
WOKINGHAM BAPTIST CHURCH, RG40 1DE



Tickets available from
www.ticketsource.co.uk/stsebswokingham
or by calling 07544 774 528
www.thesnowman.com
Image © Snowman Enterprises Ltd



Relying on credit cards and loans?

More residents are relying on these to get by as the cost of living has risen. Thousands are needing help who have not needed it before.

Citizens Advice Wokingham will listen to your situation to help you to access services from other charities and services in the Borough to meet your needs.

Call 0808 278 7958

wokingham.gov.uk/cost-of-living



Worried about money?

The Citizens Advice Wokingham team can help with welfare benefits, debt, housing and employment law.

They will listen to your situation to help you to access services from other charities and services in the Borough to meet your needs.

Call 0808 278 7958

wokingham.gov.uk/cost-of-living



Working together to help people in hardship



Keeping warm, costing less

The Winter Warmers project gets items to keep you warm and lower your energy costs to those who need them.

These include slow cookers, air fryers, heated blankets, radiator reflectors and much more.

Contact an organisation you already work with, which can contact First Days on your behalf.

Helped 1,000 residents save £150,000 last winter

wokingham.gov.uk/winter-warmers



Do you need cost of living advice?

The Citizens Advice Wokingham team can help with welfare benefits, debt, housing and employment law.

They will listen to your situation to help you to access services from other charities and services in the Borough to meet your needs.

Call 0808 278 7958

wokingham.gov.uk/cost-of-living



Working together to help people in hardship

